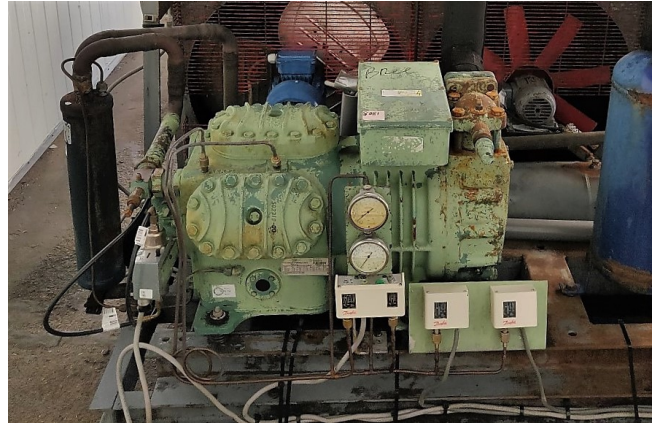


# Bitzer 6J-22.2 Y

## Specifications

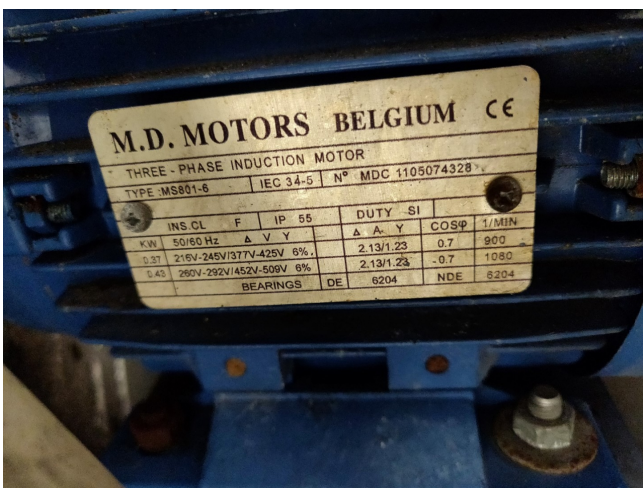
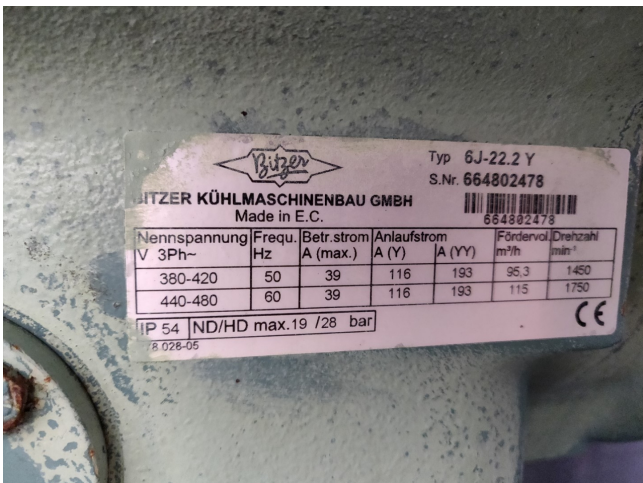
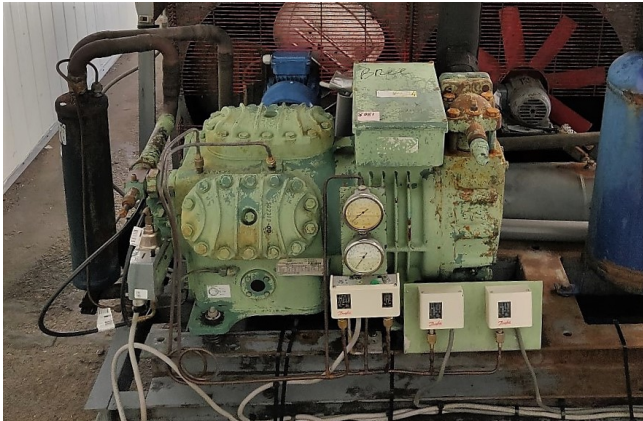
Merk	Bitzer
Type	6J-22.2 Y
Koudemiddel	Freon
kW at -5°C/+40°C	63,9
kW at -10°C/+40°C	52,6
kW at -20°C/+40°C	34,4
kW at -30°C/+40°C	20,9
kW at -40°C/+40°C	11,2
kW at -45°C/+40°C	7,5
Opmerkingen	Y.O.B. 2003
Opmerkingen	bareshaft compressor
Afmetingen	1530x1230x1560 mm (LxWxH)
Stock	1



## Description

### Used Bitzer 6J-22.2 Y

Gebruikte Bitzer 6J-22.2 Y compressor (s / n: 664802478) / 380-420V / 50Hz / Betr.strom: 39 A / 95,3 m<sup>3</sup> / h / 1450 RPM // 4x ventilatoren: 2x MD-motoren MS801-6 / 0 , 43 kW / 260-292v / 1080 RPM / 2x ACEC - AK63M / 1,25 A / 1320 RPM



Performance Table

Refrigerant	Evap. temp. (°C)	Condensing temp. (°C)	Discharge Temp. (°C)				
			40	45	50	55	60
R22	5	40	52.0	53.0	54.0	55.0	56.0
R404A	5	40	52.0	53.0	54.0	55.0	56.0
R407C	5	40	52.0	53.0	54.0	55.0	56.0



# Your partner for used commercial and industrial refrigeration equipment

Performance Table

Evaporating SST: Start value: 0, Stop value: 5  
 Condensing SST: Value: 40, Value: 40

Model	R	R	Condensing SST (°C)					
			40°C	45°C	50°C	55°C	60°C	65°C
<b>80°C</b>								
Q (kW)	03054	02033	42008	34080	27102	20602	15641	
Q <sub>evap</sub> (kW)	03054	02033	42008	34080	27102	20602	15641	
P (kW)	22.9	21.3	19.43	17.49	15.45	13.24	11.20	
Q (l/h)	38.8	36.2	33.5	30.5	27.7	24.5	21.2	
Q <sub>evap</sub> (l/h)	8872	7333	6228	5181	4254	3427	2807	
Q <sub>cond</sub> (l/h)	2.70	2.47	2.22	1.99	1.75	1.51	1.42	
Series	Standard	Standard	Standard	Standard	Standard	Standard	Standard	
Q (kg/h)	0208	0172	0167	0145	011	008	023	
Q <sub>evap</sub> (kg/h)	011.8	01.6	01.8	02.5	03.0	02.0	01.1	
Q <sub>cond</sub> (kg/h)	01054	02033	42008	34080	27102	20602	15641	
Q <sub>evap</sub> (kW)	03054	02033	42008	34080	27102	20602	15641	
P (kW)	22.9	21.3	19.43	17.49	15.45	13.24	11.20	
Q (l/h)	38.8	36.2	33.5	30.5	27.7	24.5	21.2	
Q <sub>evap</sub> (l/h)	8872	7333	6228	5181	4254	3427	2807	
Q <sub>cond</sub> (l/h)	2.70	2.47	2.22	1.99	1.75	1.51	1.42	
Q (kg/h)	0208	0172	0167	0145	011	008	023	
Q <sub>evap</sub> (kg/h)	Standard	Standard	Standard	Standard	Standard	Standard	Standard	
Q <sub>cond</sub> (kg/h)	011.8	01.6	01.8	02.5	03.0	02.0	01.1	